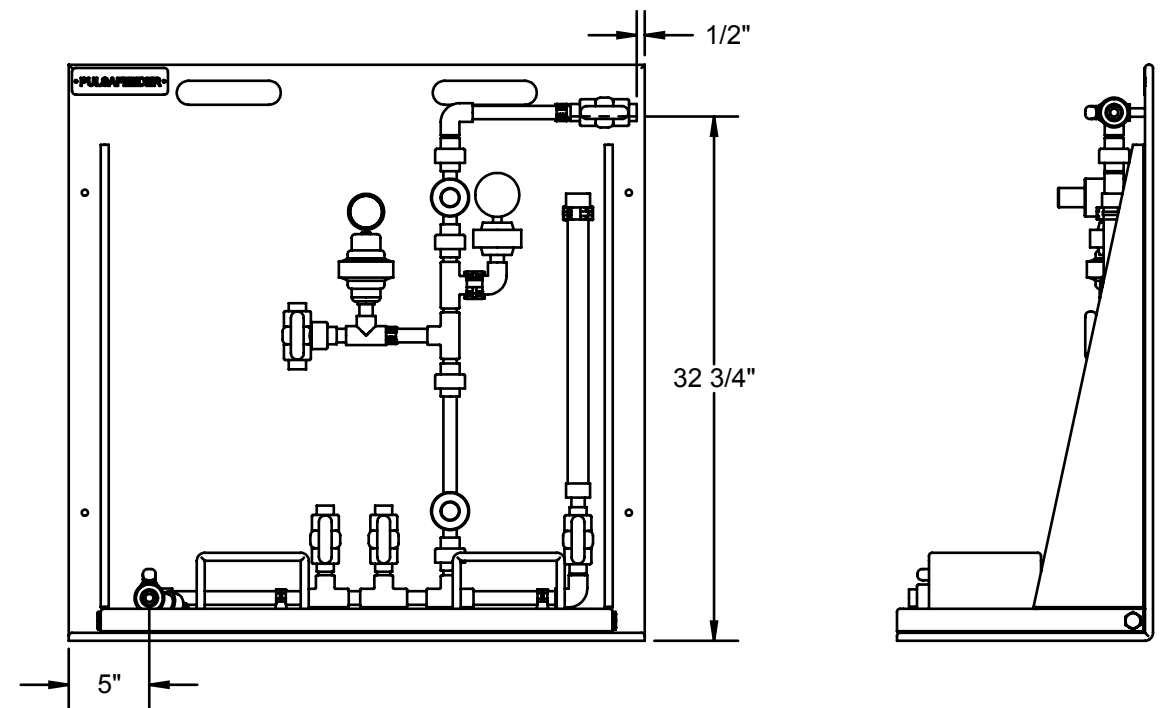
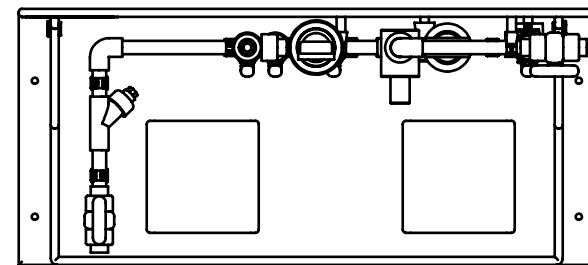
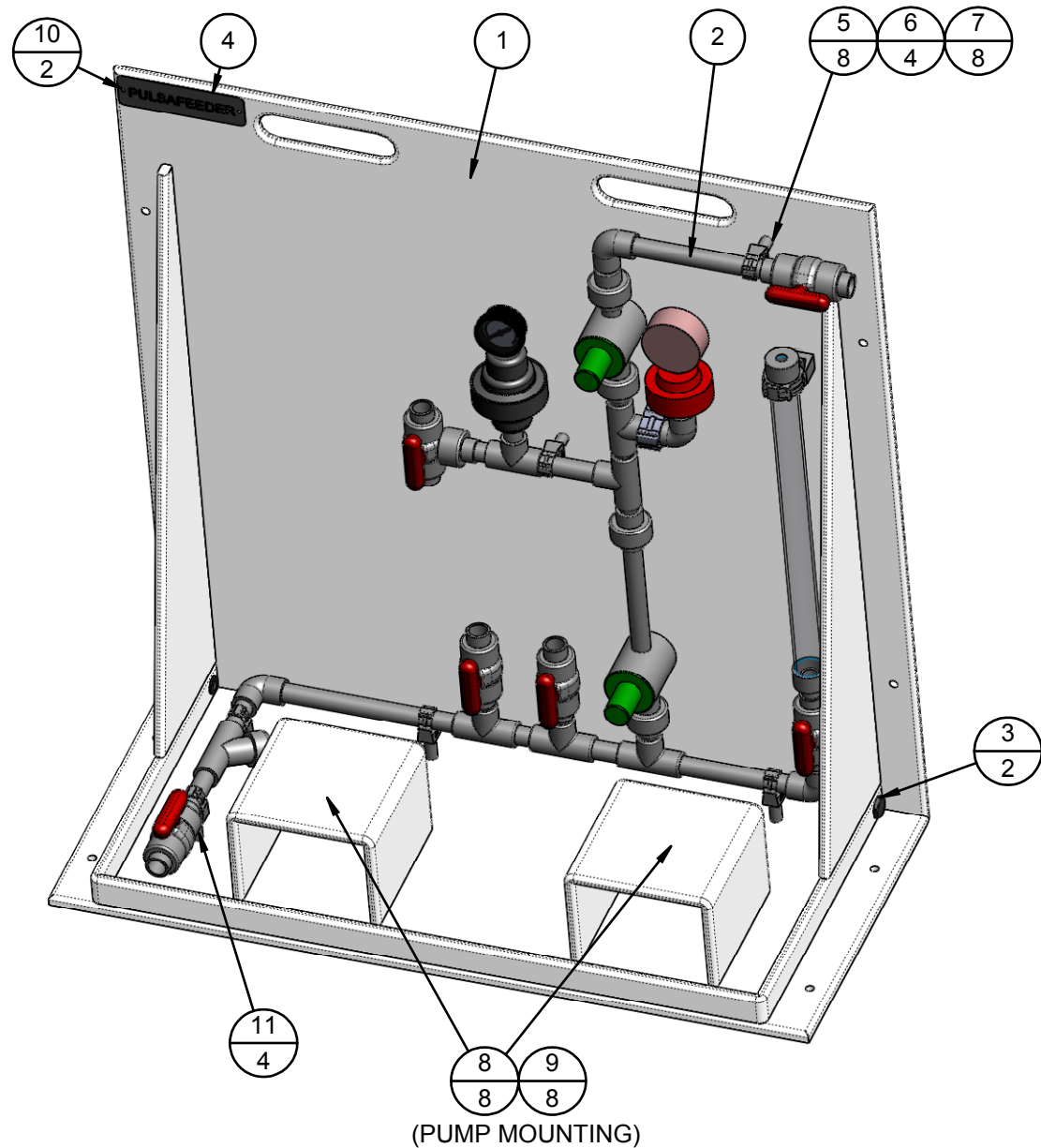


REVISIONS			
REV.	DESCRIPTION	DATE	APPROVED
A	RELEASED	04-13-09	MB
B	ADD LONGER SCREWS FOR NEW SPACERS ECO 00334	01/08/10	JH



BILL OF MATERIALS

ITEM NO.	PART NUMBER	DESCRIPTION	QTY.
1	PES00013	SKID BASE WELDMENT, (STANDARD/DUPLEX)	1
2	PES00018-001	PIPING ASSEMBLY, SIMPLEX/DUPLEX RT - STANDARD (VITON SEALS) LEAD STANDBY	1
3	03-043-00	PLUG, PVC-80, 1/2" T	2
4	J25334	PULSAFEEDER NAME PLATE	1
5	06-011-02	#10-32 TEE NUT	8
6	U0810036	SCREW #10-32 X 1.7" LNG	4
7	L9801300-188	#10 FLAT WASHER	8
8	U0810386	SCREW, #10-32 X 1" LNG	8
9	L9804000-000	#10-32 LOCK NUT	8
10	U0900857	SCREW, (SST) #6-20 X .38" LNG, TYPE-BT PHP	2
11	L9803300-188	SCREW(SST), #10-32 X 2.0 PHP	4

PROPRIETARY AND CONFIDENTIAL
 THE INFORMATION CONTAINED IN THIS DRAWING IS THE SOLE PROPERTY OF PULSAFEEDER SPO. ANY REPRODUCTION IN PART OR AS A WHOLE WITHOUT THE WRITTEN PERMISSION OF PULSAFEEDER IS PROHIBITED.

UNLESS OTHERWISE SPECIFIED:	NAME	DATE
DIMENSIONS ARE IN INCHES TOLERANCES: FRACTIONAL: ±1/64 ANGULAR: ± 1/2° X.X = .050in. X.XX = .015in. X.XXX = .005in.	DRAWN	PEC 04/13/09
	CHECKED BY	MB 04/13/09
	ENG APPR.	MB 04/13/09
INTERPRET GEOMETRIC TOLERANCING PER: ASME Y14.5M-1994	COMMENTS:	
MATERIAL (SEE NOTES)		
FINISH (SEE NOTES)		
DO NOT SCALE DRAWING		

PULSAFEEDER
INDEX CORPORATION

TITLE: **PRE-ENGINEERED SKID SYSTEM, LEAD STAND-BY, VITON SEALS**

SIZE B	DWG. NO. PES2L-V	REV B
---------------	------------------	--------------

SCALE: 1:12 SHEET 1 OF 1