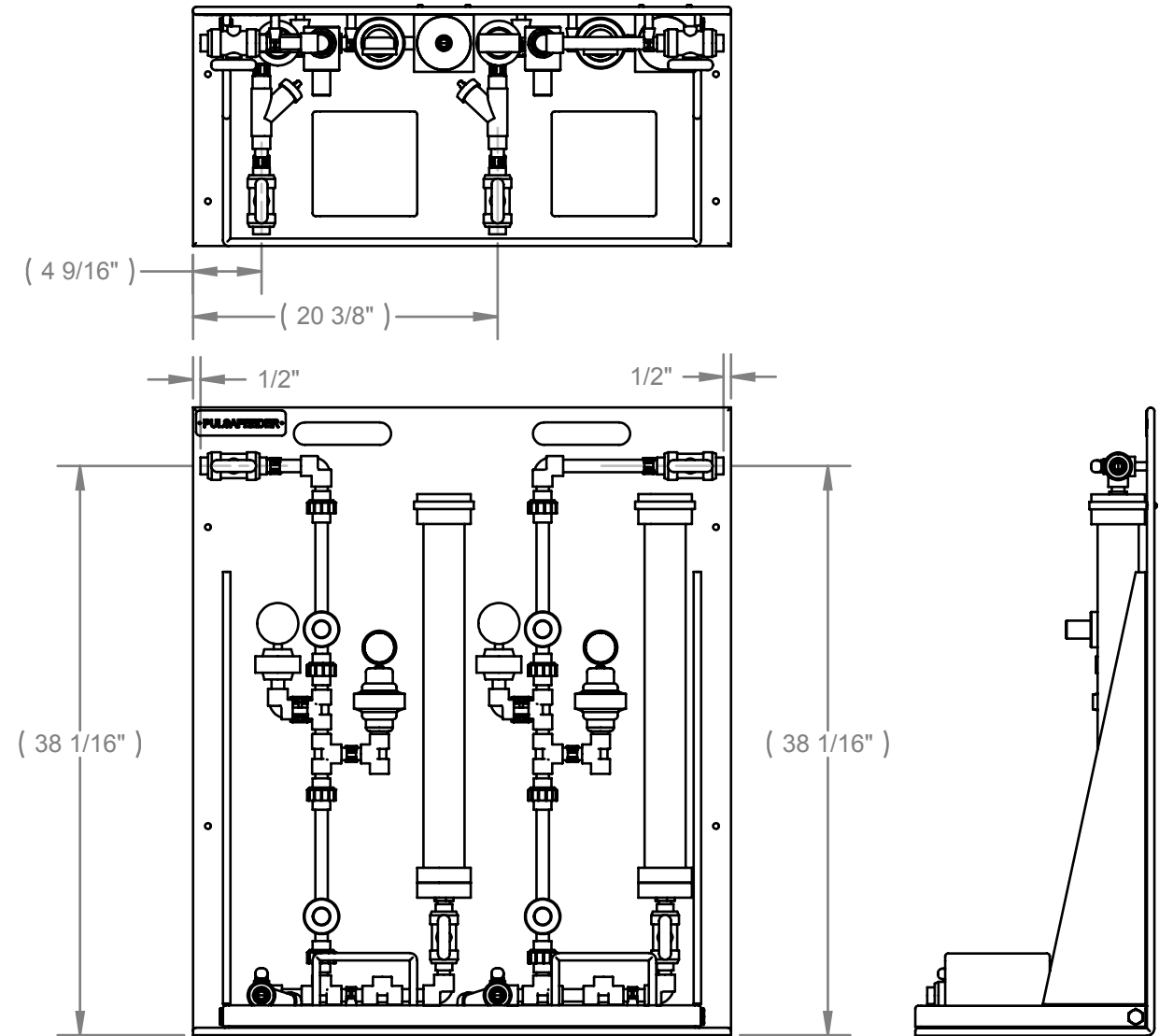


REVISIONS			
REV.	DESCRIPTION	DATE	APPROVED
A	RELEASE	04-30-09	MB
B	CHG CONFIG TO ACCOMODATE CAL. COL. ECO 00271	05-26-09	MB
C	ADD LONGER SCREWS FOR NEW SPACERS ECO 00334	01/08/10	JH



**BILL OF MATERIAL**

ITEM NO.	PART NUMBER	DESCRIPTION	QTY.
1	PES00013-001	SKID BASE WELDMENT, (STANDARD/DUPLEX)	1
2	PES00019-005	PIPING ASSEMBLY, DUPLEX LT - STANDARD (PVDF)(VITON SEALS) HI FLOW	1
3	PES00018-005	PIPING ASSEMBLY, SIMP/DUP RT - STANDARD (PVDF) (VITON SEALS) HI FLOW	1
4	03-043-00	PLUG, PVC-80, 1/2" T	2
5	J25334	PULSAFEEDER NAME PLATE	1
6	06-011-02	#10-32 TEE NUT	14
7	U0810036	SCREW #10-32 X 1.7"	8
8	L9801300-188	#10 FLAT WASHER	14
9	U0810386	SCREW, #10-32 X 1"	8
10	L9804000-000	#10-32 LOCK NUT	8
11	U0900857	SCREW, (SST) 6-20 X .38 TYPE-BT PHP	2
12	PES00038	HOLDER, CALIBRATION COLUMN	2
13	06-008-26-E	SCR(SST),#8X1.0-LG TYPE-BT PHP	4
14	L9803300-188	SCREW(SST), #10-32 X 2.0 PHP	6

PROPRIETARY AND CONFIDENTIAL  
 THE INFORMATION CONTAINED IN  
 THIS DRAWING IS THE SOLE  
 PROPERTY OF  
 PULSAFEEDER SPO. ANY  
 REPRODUCTION IN PART OR AS A  
 WHOLE WITHOUT THE WRITTEN  
 PERMISSION OF PULSAFEEDER  
 IS PROHIBITED.

UNLESS OTHERWISE SPECIFIED:  
 DIMENSIONS ARE IN INCHES  
 TOLERANCES:  
 FRACTIONAL ±1/64  
 ANGULAR: ± 1/2°  
 X.X=.050in.  
 X.XX=.015in.  
 X.XXX=.005in.

INTERPRET GEOMETRIC  
 TOLERANCING PER:  
 ASME Y14.5M-1994

MATERIAL (SEE NOTES)

FINISH (SEE NOTES)

DO NOT SCALE DRAWING

	NAME	DATE
DRAWN	PEC	04-30-09
ENG APPR.	MB	04-30-09
CHECKED:	MB	04-30-09
COMMENTS:		

**PULSAFEEDER**  
INEX CORPORATION

**TITLE: SKID ASSEMBLY,  
 DUPLEX/STANDARD,  
 (PVDF) VITON SEALS  
 HI FLOW**

SIZE <b>B</b>	DWG. NO. <b>PES2S-VKHF</b>	REV <b>C</b>
------------------	-------------------------------	-----------------

SCALE: 1:1 SHEET 1 OF 1