

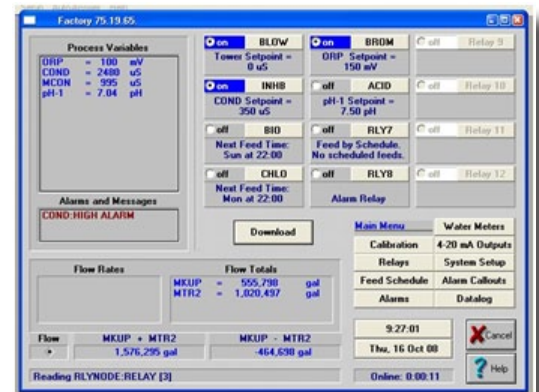
The **PULSAlink Communications Software** is a Windows based software program that allows you to access all of the features and programming of the PULSAblue 3300/3400 Series controllers. PULSAlink also stores and downloads controller data log in comma delimited files or imports them into the PULSAlink Graphing program.

Key Features

- Easily change settings and download data remotely.
- Track water meter inputs and relay outputs.
- Graph all the sensor inputs.
- Manage all of your controllers in one easily to use program.
- Automatically download system data on a schedule.
- **PULSAlink RS-232 Direct Connection**
Connect directly to your PC via a standard DB9 serial port connector up to 50 feet away.
- **Optional LONworks Interface**
Integrates directly with the Building Management Systems. Communicates with MODBUS, and BACNET using commercially available LONworks adapters.

Operating Benefits

- Access devices from a local network or a remote location.
- Self contained web page, not hosted by manufacturer.
- Web page is accessible by an IP-based application (i.e. a web browser) over an IP network from any place in the world.
- E-mail and text alerts can be sent free of charge using the WebNode or Wireless Internet Device.
- Our Proprietary software, written in multilayer firmware, protects your systems security.



Communication Options



External Modem

- Housed in a NEMA4X enclosure for use with the RS-232 option and a dedicated analog phone line.



PULSAlink Ethernet Based WebNode

- Connect your PULSAblue controller to your LAN and access it over the internet
- Multi-layered firmware ensures network security and protection from potential hackers.
- E-mail and text alerts can be sent free of charge.



PULSAlink Wireless Internet

- Access your PULSAblue unit from the internet anywhere in the world fast and secure.

Aftermarket

- Solenoid Valves
- Valve Packages
- Calibration Solutions



PULSAlink Communications Software

Specifications and Model Selection

Description	Part Number
Wireless Internet Device	2000066
PULSAlink WebNode	2000057
1 Year Wireless Service Plan	2000059
RS-232 Card	2000052

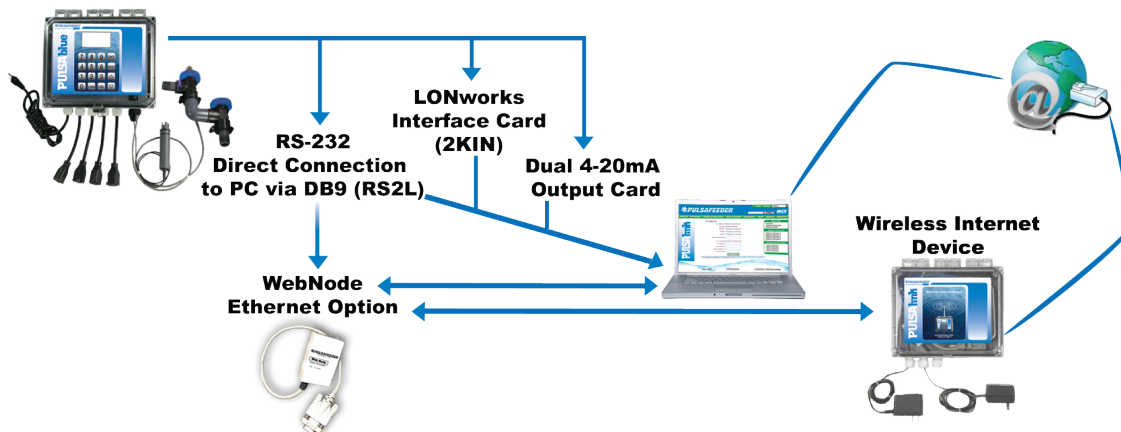
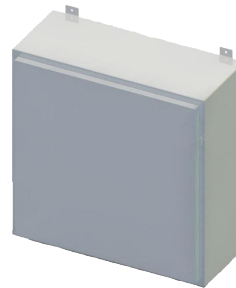
Specifications

Platform Required	Minimum 386 processor with 4mb of RAM Windows 3.1, 95, 98, NT, 2000, XP or Vista
PULSAlink RS-232 Direct Connection	1200, 2400, 4800, 9600 or 19,200 BAUD rates 8 Data Bits 1 Stop Bit No Parity
External Modem	100% Hayes compatible AT command set 14,00 BAUD or higher
Internet or Intranet Requirements	A PULSAlink WebNode is required for internet or intranet connection options and must be used in conjunction with the RS-232 option
Datalogging	Up to 1 hour at 1 minute intervals Up to 28 days at 1 hour intervals Both logs include process minimum, maximum, average pump run times and water meter totals. Minimum, maximum and average pump run times reset at the top of the hour and can be downloaded by PULSAlink into a file of comma-delimited ASCII data that can be used by the PULSAlink Graphing program or imported into other applications, such as spreadsheets.
Security:	View-only mode unless correct password is entered. • 8-digit password can be changed only at the controller

Custom Engineered Designs

Fully Enclosed Systems

The controller and metering pumps are enclosed in a steel enclosure with a hinged door for protection and security. The Standard system includes a sample stream plumbing assembly, 3/4" PVC inlet valve, 3/4" PVC outlet valve, sample valve, clear bowl strainer and a flow switch. Optional features include corrosion coupon racks, flow meter, and prewired electrical connections.



pulsafeeder.com

PULSAFEEDER

27101 Airport Rd
Punta Gorda, FL 33982
Phone: ++1(941) 575-3800
Fax: ++1(941) 575-4085

An ISO 9001 and ISO 14001 Certified Company

IDEX
CORPORATION

PCS001 D10