

The **PULSAlink** comprehensive communications options give you the data you need, when you need it most. The PULSAlink communication package has a variety of options available to suit your specific needs. Data logging and PULSAlink alerts keep you informed about important information about your systems by detailed graphing, e-mail and text messages as well as the ability to connect to your PULSAblue system anywhere in the world over the internet. Relax, you're covered with PULSAblue regardless of your communication and data acquisition requirements.

Key Features

- **PULSAlink Wireless Internet**
 No local network to plug into? Our totally secure wireless internet access option operates on the Verizon 3G network. Simple Plug and Play installation; just mount the hub within 50 feet of the controller, plug it in and you have instant access. This option does require an annual service fee for the wireless service, but there is no connection to your network, or added cost of running communications cables.
- Compatible with all existing 3300/3400 Series PULSAblue controllers that have both the RS-232 option and the WeNode option installed.
- The PULSAlink wireless internet device is a self contained 3G cellular modem and broadband router that can connect up to four PULSAlink WebNodes and 3300/3400 Series controllers to the internet.
- The PULSAlink Wireless internet device can also act as a wireless local area network for access to the internet from your PC.

Communication Options



PULSAlink WebNode

- Connect your PULSAblue controller to your LAN and access it over the internet.
- Multi-layered firmware ensures network security and protection from potential hackers.
- E-mail and text alerts can be sent free of charge.



PULSAlink Software

- Our propriety software, written in multilayer Firmware, protects your systems security.

Operating Benefits

- Access devices from a local network or a remote location.
- Self contained web page, not hosted by manufacturer.
- Web page is accessible by an IP-based application (i.e. a web browser) over an IP network from any place in the world.



Aftermarket

- Solenoid Valves
- Valve Packages
- Calibration Solutions



PULSAlink Wireless
 Internet Device

PULSAlink Wireless Internet Device

Specifications and Model Selection

| Description | Part Number |
|------------------------------|-------------|
| Wireless Internet Device | 2000066 |
| PULSAlink WebNode | 2000057 |
| 1 Year Wireless Service Plan | 2000059 |
| RS-232 Card | 2000052 |

Specifications

Receiver Sensitivity Network

Mbps-80 dBm to Mbps-66 dBm
 Auto-Reconnect · DHCP Server · DNS Relay Dial on Demand · NTP · Bridge between LAN and WLAN SNMP v1, 2c · MAC Access Control · DMZ Support NAT between LAN and WWAN · IP Port Forwarding · OFDM Technology
 Port Forwarding and open access will be preconfigured at factory. WEP will be programmed per contractor name and specification on included in labeling within the control box.

Wireless Internet Device Management

User-Friendly Web GUI · Setup Wizard · Multiple Cellular Network Dial Up Mode · Traffic and Event Log · 3G WWAN Session and Status Monitoring · Browser Firmware Upgradable 3G/4G · WWAN Session and Status

Wireless Internet Device Management Monitoring

Industry Leading Firewall Features · Anti-Attack · Closed System NAT/Port Forwarding · URL Filter · VPN pass-through for IPsec and PPTP · SPI · WPA · Mac Filter · 64-bit WEP and 128-bit RC4 encryption

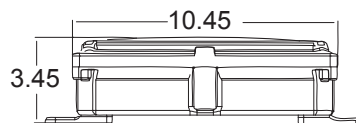
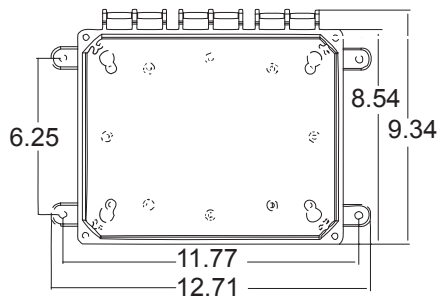
Additional Technical Specifications

Interface Wired: 5x10/100 Base-T (1 WAN and 4 LAN)
 Maximum 100 feet from controller

WLAN: IEEE 802.11b/g embedded

Wireless: 3G cellular Network PCMCIA Slot

Dimensions



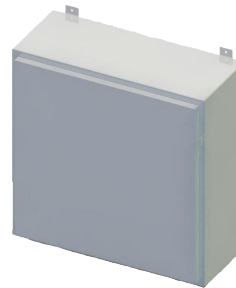
Wireless Service Plan

The PULSAlink Wireless Internet Device uses a national carrier for interface and will arrive pre-configured with a static IP and one year's pre paid subscription when ordered with part number 2000059. Usage that exceeds reasonable expectations or abuse of download rate may result in additional monthly fees being assessed. (Typically downloads and access exceeding 5 Gigabytes per month is considered excessive). The annual renewal fee will be assessed and billed once per year to the designated recipient. PULSAlink Wireless Internet Device and WebNode are configured to use Pulsafeeders net based E-mail and notification methods for alarms.

Custom Engineered Designs

Fully Enclosed Systems

The controller and metering pumps are enclosed in a steel enclosure with a hinged door for protection and security. The Standard system includes a sample stream plumbing assembly, 3/4" PVC inlet valve, 3/4" PVC outlet valve, sample valve, clear bowl strainer and a flow switch. Optional features include corrosion coupon racks, flow meter, and prewired electrical connections.



pulsafeeder.com



27101 Airport Rd
 Punta Gorda, FL 33982
 Phone: ++1(941) 575-3800
 Fax: ++1(941) 575-4085

An ISO 9001 and ISO 14001 Certified Company



LNK001 D10