

## Contacting Head Water Meters

**Multi-Jet Meters**, 3/4 in. to 2 in., are designed for use in conjunction with a pulse timer to proportionally control pumps, valves etc. Typical applications include water treatment in cooling tower and boiler systems, water chlorination, car washes, and other industrial processes which require proportional control.

The Multi-Jet chamber of the water meter assures accuracy over a wide range of flows with low head loss. To prevent wear and maintain accuracy the load is equally distributed on the impeller.

The body of the water meter is constructed from bronze and factory tested to meet the AWWA C-708 Multi-Jet Meter accuracy specifications. The Multi-Jet Meter has a contact rating of 24Vdc or Vac at 20 mA.

**Turbine Meters**, 3in. to 6 in., operate continuously with exceptional accuracy. Each meter incorporates a highly efficient horizontal turbine that essentially floats on the water. The turbine is attached to a Tungsten steel shaft riding in Jewel bearings. The rotation of the turbine is transmitted through a magnetic drive to a sealed odometer register.

The cast-iron main case of the turbine meter is coated with a special anti-corrosive material. The register plate is constructed of ABS plastic to ensure long-term reliability. The turbine meter has a contact rating of 24Vdc or Vac at 100mA.

### Features

- Non-Resettable Mechanical Totalizer
- 3/4" to 6" Pipe Sizes
- Dry Top Multi-Jet Design

## Operating Benefits

- Accurate and Economical
- Rugged Construction
- Tolerates Low Quality Water



## Aftermarket

- Metering Pumps
- Cooling Tower Controllers
- Boiler Controllers
- Pre-Engineered Systems



# Water Meters

Electrical Contacting Heads for Proportional Feed Systems

# Water Meters Specifications and Model Selection

CONTACTING WATER METERS - COLD WATER - Selection Guide														
Rating	Weight (lbs.)	Flow	Code		Rating	Gallons per Contact								
			MTR	--		3/4"	1"	1.5"	2"	3"	4"	6"		
.75" NPT	6	.22 - 22 GPM	2	01	0.1 GPC	X								
1" NPT	10	.44 - 52 GPM	3	02	0.25 GPC	X	X							
1.5" NPT	20	.88 - 88 GPM	4	03	0.5 GPC	X	X							
2" NPT	23	2 - 132 GPM	5	04	1.0 GPC	X	X	X	X					
3" Flanged	47	440 GPM	6	06	5.0 GPC	X	X	X	X					
4" Flanged	54	660 GPM	7	07	10 GPC	X	X	X	X					
6" Flanged	78	1650 GPM	8	09	50 GPC	X	X	X	X	X	X	X	X	X
				10	100 GPC	X	X	X	X	X	X	X	X	X
				13	1,000 GPC					X	X	X	X	X

## Engineering Data

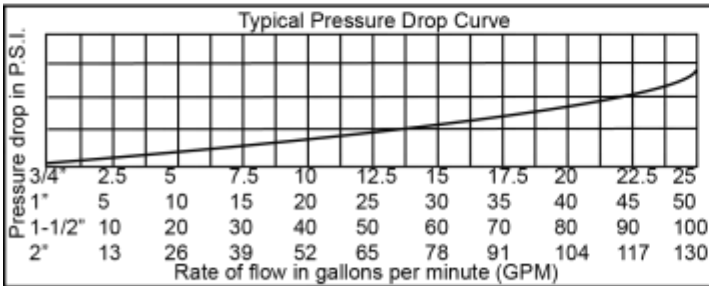
<b>Materials</b>	<b>Multi-Jet</b>
<b>Body:</b>	Cast Bronze
<b>Drive Magnet:</b>	Alnico
<b>Temperature</b>	
<b>Cold Water:</b>	150° F (40°C) max
<b>Pressure:</b>	150 psi Operating
<b>Pulse Output</b>	
<b>Sensor:</b>	Reed Switch
<b>Max Current:</b>	20 mA
<b>Max Voltage:</b>	24Vdc or Vac
<b>Cable Length:</b>	12' (4m) Standard (2000' max Run)
<b>Accuracy:</b>	+/- 1.5% of Reading

## Engineering Data

<b>Materials</b>	<b>Turbine</b>
<b>Body:</b>	Cast Iron, Epoxy Coating
<b>Register Plate:</b>	ABS Plastic
<b>Drive Magnet:</b>	Alnico
<b>Turbine:</b>	Plastic
<b>Turbine Shafts:</b>	Tungsten Steel
<b>Bearings:</b>	Jewel
<b>Temperature</b>	
<b>Cold Water:</b>	150° F (40°C) max
<b>Pressure:</b>	200 psi (14 bar) Operating
<b>Pulse Output</b>	
<b>Sensor:</b>	Reed Switch
<b>Max Current:</b>	100 mA
<b>Max Voltage:</b>	24Vdc or Vac
<b>Cable Length:</b>	12' (4m) Standard (2000' max Run)
<b>Above Transition:</b>	+/- 2% of Reading*
<b>Below Transition:</b>	+/- 5% of Reading*

\*See Flow Range Table Below

**3/4" - 2" Meters have male NPT Bronze Bodies  
150 PSI max, 105 F max.**

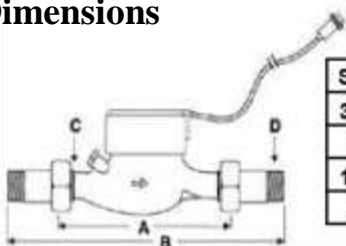


**3", 4" & 6" Meters have Epoxy Coated Ductile Iron  
Flanged Bodies 200 PSI max, 105 F max.**

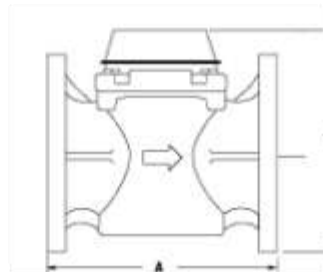
Flow Range (GPM)	3"	4"	6"
<b>Minumum</b>	5.3	8	20
<b>Max. Continuous</b>	352	528	1320
<b>Max. Intermittent</b>	440	660	1650
<b>Transition *</b>	24	40	80

\* The flow rate at which accuracy changes from +/- 2% of reading (above Transition) to +/- 5% of reading (below Transition).

## Dimensions



Size	A	B	C (IPS)	D (NPT)
3/4"	7.50	12.62	1	3/4
1"	10.25	15.62	1 1/4	1
1.5"	11.75	17.62	2	1 1/2
2"	11.75	17.62	2 1/2	2



Size	A	B	Flanges
3"	8.86	10.87	150# ANSI
4"	9.84	11.26	150# ANSI
6"	11.81	13.60	150# ANSI

pulsafeeder.com



27101 Airport Rd  
Punta Gorda, FL 33982  
Phone: ++1(941) 575-3800  
Fax: ++1(941) 575-4085

An ISO 9001 and ISO 14001 Certified Company



WM001 B12