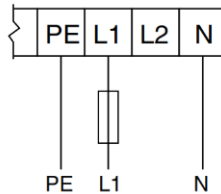


Topic – VFD Power - Single Phase to 3 Phase

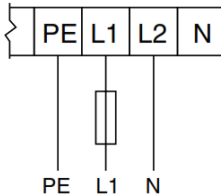
1. The VFD Vector offered by Pulsafeeder with our Blackline pumps is a variable frequency drive that controls the speed of the pump motor. Although the model Pulsafeeder offers has a single phase 115/230vac input, the motor on the pump must be a 3 phase motor. This does not mean that the pump requires 3 phase power to operate. The VFD takes the single phase input power and splits it to the 3 phases at different frequencies to achieve speed control.
2. Below are the diagrams for connecting the single phase power to the VFD as well as the motor connections from the VFD. Please note that the motor will be pre-wired at Pulsafeeder prior to shipping.

Mains connection to 115vac single phase supply

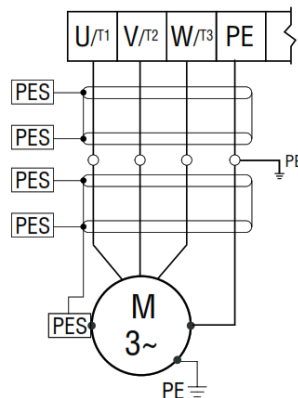
(PE = Potential Earth Ground)

**Mains connection to 230vac single phase supply**

(PE = Potential Earth Ground)

**Motor connection**

(connected at factory for Blackline pumps)



PES = Protective Earth Shielding