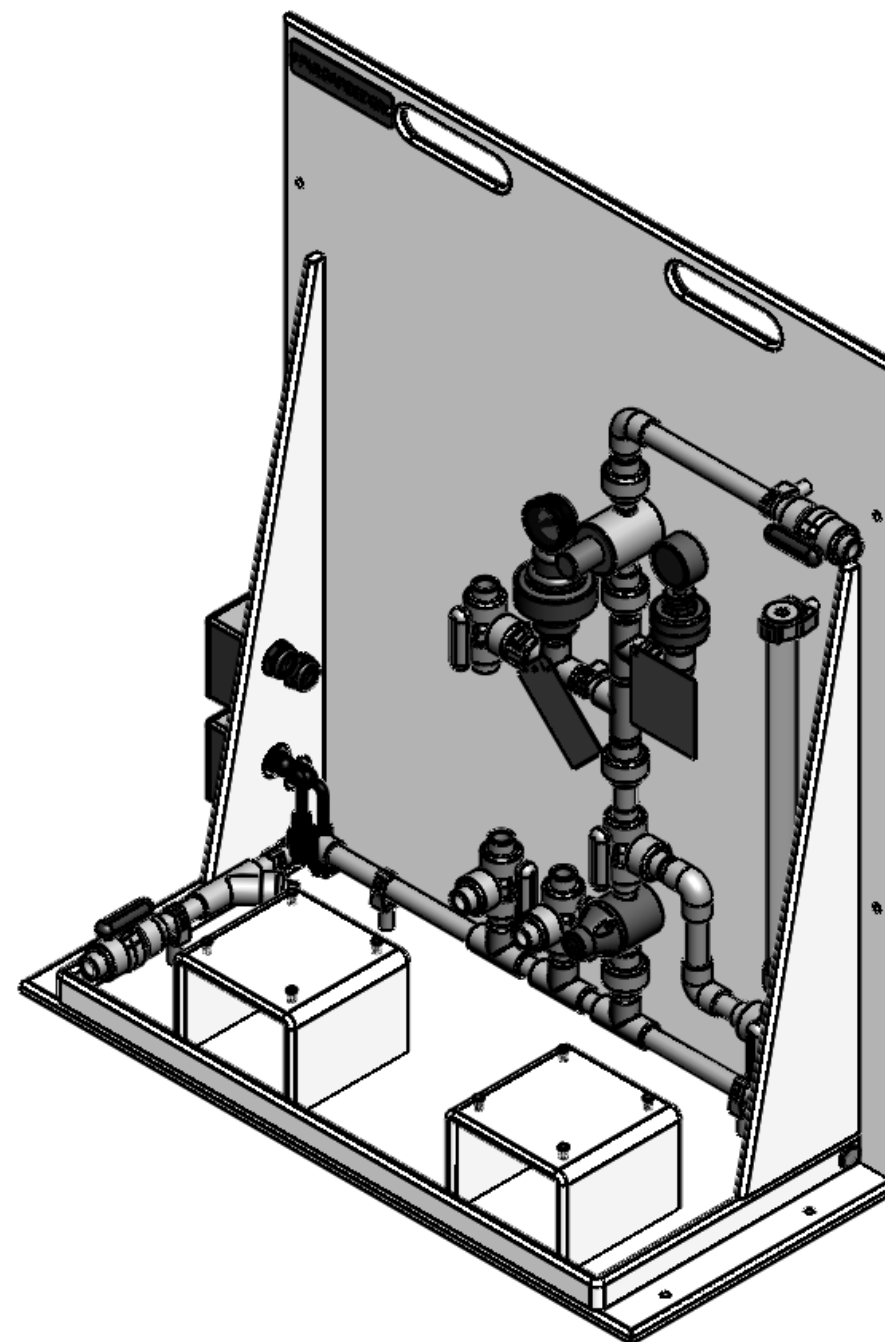


DWG NO.	PES2L-ECF		SHEET 1	OF 2
REV.	DESCRIPTION	DATE	MOD	CHK'D
A	RELEASED	1/22/2016	CAW	DM
B	UPDATED ASSEMBLY PER CURRENT STANDARDS PER ECN 2074	4/27/2017	CAW	DM



ITEM NO.	PART NUMBER	DESCRIPTION	Default/QTY.
1	PES00013-002	SKID BASE WELDMENT, (STANDARD/DUPLEX)	1
2	PES00037-009	PIPING ASSY STD, EPDM	1
3	03-043-00	PLUG, PVC-80, 1/2" T	2
4	J25334	LABEL(LEXAN), LOGO NAMEPLATE	1
5	PES00040	TAG, PULS DMPNR CHARGE	1
6	U0900857	SCR(SST),6-20 X.38 TYPE-BT PHP	2
7	U0813501	SCR,PH,SST, 10-32 1.50	3
8	U0810036	SCR,PAN HD,CR,SST,10-32 1.75	6
9	06-011-02	TEE NUT,10-32,.24BARREL,3PRONG	9
10	16-288-03-02	PVC JUCTION BOX 4X4X2 (ALTERED)	2
11	L9809602-188	SCREW(SST), #8 X 1/2 LNG TYPE-BT (TYPE-25)	8
12	06-138-30	LIQTITE,7.0MM, 3 HOLE, BLK	2
13	13-003-03-1	PIGTAIL 115V	2
14	06-061-13	TERM,BLCK,4 PIN SCREW TYPE	2
15	L9804000-000	NUT(STL),10-32 W/EXT.STAR WASH	8
16	U0810386	SCR,10-32X1,PAN HD,CR,REC,SS	8
17	PES00032	CARD, COLUMN FILL, LAMINATED	1

INTERPRET GEOMETRIC TOLERANCING PER ASME Y14.5M-1994 UNLESS OTHERWISE SPECIFIED	
TOLERANCE	MACHINED SURFACES ROUGHNESS
X.X"	± .050"
X.XX"	± .015"
X.XXX"	± .005"
ANGLES	± 0°30'
BREAK ALL SHARP EDGES .015" MAX. ALL DIMENSIONS IN INCHES	

DWN	CAW	01/22/16
CHK	DM	01/25/16
UNCONTROLLED WHEN PRINTED-USER IS RESPONSIBLE TO VERIFY REVISION LEVEL OF THIS DOCUMENT PRIOR TO USE.		

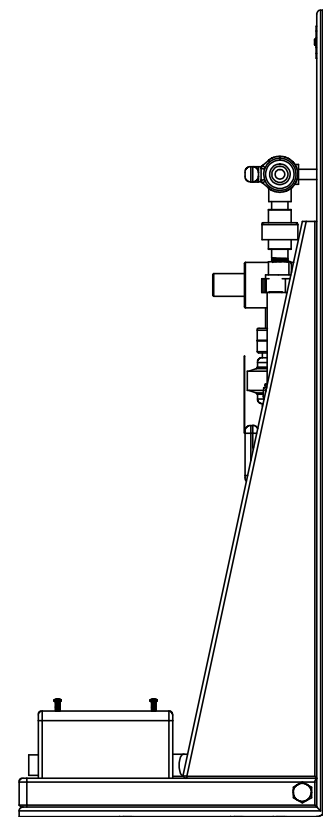
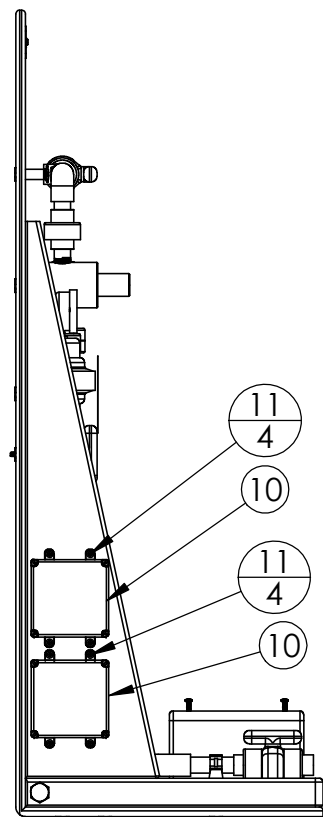
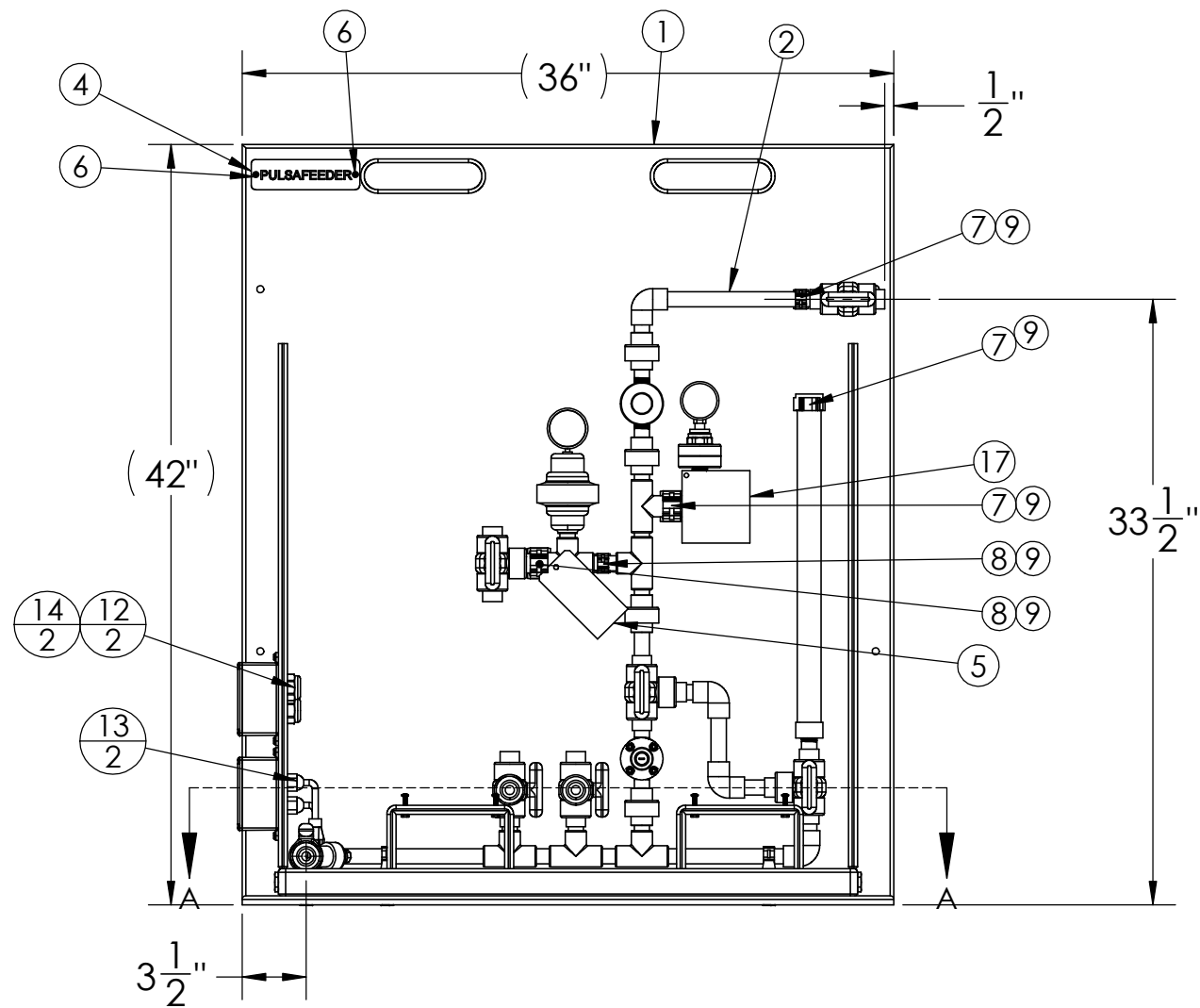
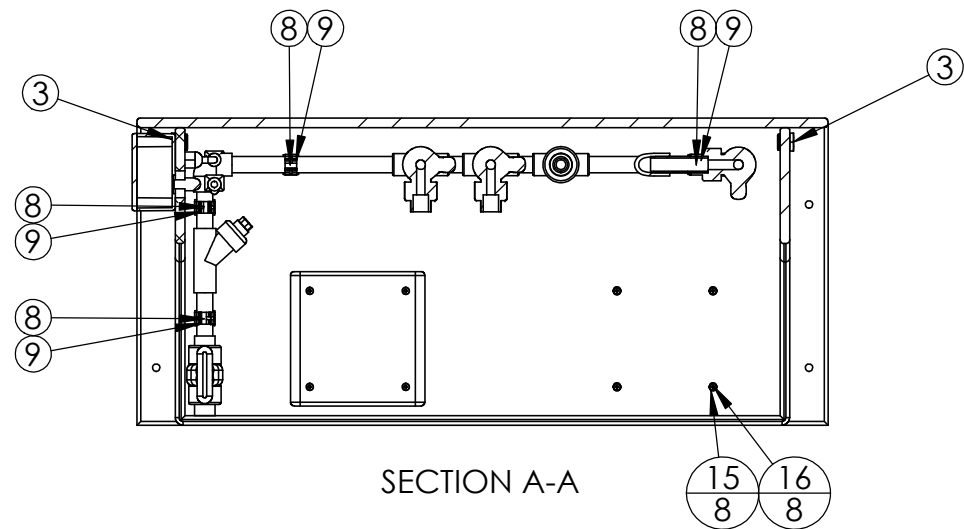
PULSAFEEDER IDEX CORPORATION

TITLE **SKID ASY BACKUP, STD EPDM**

REV **B** SIZE **B** DWG NO **PES2L-ECF**

FILE **PES2L-ECF** SCALE: 1:8 SHEET **1** OF **2**

PROPRIETARY DATA: THIS DOCUMENT DISCLOSES INFORMATION AND DATA IN WHICH PULSAFEEDER HAS PROPRIETARY RIGHTS. THE RIGHT TO REPRODUCE, USE OR DISCLOSE IN WHOLE OR IN PART EXCEPT BY WRITTEN PERMISSION IS PROHIBITED.



INTERPRET GEOMETRIC TOLERANCING PER ASME Y14.5M-1994 UNLESS OTHERWISE SPECIFIED

TOLERANCE		MACHINED SURFACES ROUGHNESS 125Ra
X.X"	± .050"	
X.XX"	± .015"	
X.XXX"	± .005"	
ANGLES	± 0°30'	

BREAK ALL SHARP EDGES .015" MAX.
ALL DIMENSIONS IN INCHES

PROPRIETARY DATA: THIS DOCUMENT DISCLOSES INFORMATION AND DATA IN WHICH PULSAFEEDER HAS PROPRIETARY RIGHTS. THE RIGHT TO REPRODUCE, USE OR DISCLOSE IN WHOLE OR IN PART EXCEPT BY WRITTEN PERMISSION IS PROHIBITED.

DWN	CAW	01/22/16
CHK	DM	01/25/16
UNCONTROLLED WHEN PRINTED-USER IS RESPONSIBLE TO VERIFY REVISION LEVEL OF THIS DOCUMENT PRIOR TO USE.		

PULSAFEEDER IDEX CORPORATION

TITLE **SKID ASY BACKUP, STD EPDM**

REV B	SIZE B	DWG NO PES2L-ECF
FILE PES2L-ECF	SCALE: 1:10	SHEET 2 OF 2